

GENERAL NOTES

Figured dimensions to be taken in preference to scaled dimensions
 If in doubt ask
 Refer all discrepancies to DMI prior to costing, construction or fabrication
 Works carried out or goods supplied from information contained on this drawing are subject to DMI Standard Terms and Conditions
 THIS DRAWING IS THE PROPERTY OF DMI. COPYRIGHT IS RESERVED BY THEM AND THE DRAWING IS ISSUED ON THE CONDITION THAT IT IS NOT COPIED, REPRODUCED, RETAINED OR DISCLOSED TO ANY UNAUTHORISED PERSON, EITHER WHOLLY OR IN PART, WITHOUT CONSENT IN WRITING BY DMI.

LAB

WASTE
 HOT AND COLD
 1/2" COPPER AIR WITH STOPCOCK
 SUNCTION PIPE IN CABINET

PROSTHETICS

SUNCTION PIPE (UNDERNEATH SINK CABINET)
 WASTE FOR SUCTION
 1/2" COPPER AIR AND WATER (UNDER SINK)
 PVC FOR SUCTION SWITCH WIRES (UNDER SINK)
 GPO FOR CHAIR AS PER DRAWING SWITCHED TO CABINETS

PLUMBING

SUNCTION PIPE 25mm AND 45° BEND FROM MOTOR TO OUTLETS
 PROCEDURE 01
 1250mm - 2350mm TO SUCTION PIPE "TO CHAIR" AS PER DRAWING "
 PROCEDURE 02
 1250mm - 2350mm TO SUCTION PIPE "TO CHAIR" AS PER DRAWING
 PROCEDURE 01 AND 2 "CHAIR"
 1/2" COPPER PIPE TO CHAIR "AIR" 1/2" BSP FEMALE 10mm ABOVE FLOOR LEVEL
 1/2" COPPER PIPE TO CHAIR "WATER" 1/2" BSP FEMALE 10mm ABOVE FLOOR LEVEL
 WASTE 40mm TO 25mm (50mm ABOVE FLOOR)
 50mm PVC TO CABINETS 45° BEND
 PVC FOR SUCTION SWITCH WIRES
 BASINS (2), HOT, COLD AND WASTE
 AIR PIPE 1/2" (UNDERNEATH CABINETS) WITH STOPCOCK TO EACH SURGERY
 25mm SUCTION PIPE FROM PLANT 50m ABOVE FLOOR LEVEL

STERILIZATION ROOM

1/2" COPPER FILTERED AIR AND WATER. WATER TO BE ISOLATED WITH STOPCOCK
 WASTE FOR SINK - WASTE FOR AUTOCLAVE AND WASTE FOR FUTURE X-RAY DEVELOPER
 HOT AND COLD TO SINKS - WATER AND AIR PIPE DESIGNATED

PLANT

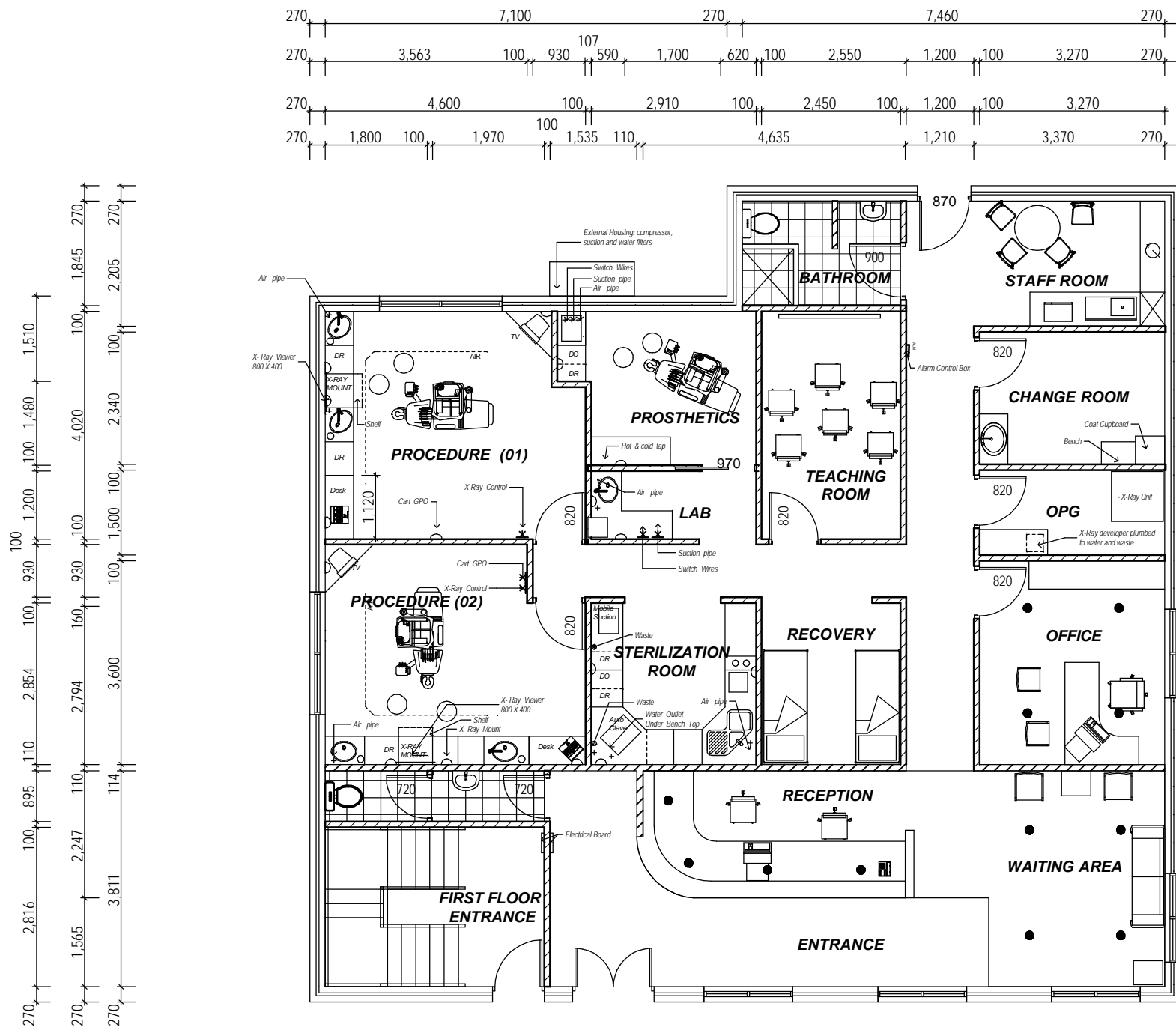
WASTE - 1/2" COPPER WATER FOR SUCTION MOTOR - EXHAUST AND MANIFOLD
 1/2" COPPER AIR (FILTERED) 1/2" COPPER WATER (FILTERED) TO DESIGNATED AR

ELECTRICAL

PROCEDURE 01 AND 02 AND PROSTHETICS
 240v TO CHAIR (SWITCHED TO CABINETS)
 3 CORE SUCTION SWITCH WIRES FROM CHAIR TO SUCTION MOTOR AND PROSTHETICS
 240V TO X-RAY MOUNT RCD AND ISOLATION REQUIRED TO CABINETS
 3 CORE LOW VOLTAGE SWITCH WIRES FROM X-RAY MOUNT TO CONTROL
 240V COMPRESSOR - SEPERATE CIRCUIT (SWITCHED TO STAFF ROOM - CONFIRM)
 240V SUCTION MOTOR - SEPARATE CIRCUIT (SWITCHED TO STAFF ROOM - CONFIRM)
 GPO ON CABINET UPSTANDS, CONFIRM WITH DOCTOR AMOUNT REQUIRED, ALSO LAB
 240VOLT FOR CEILING (SEPARATE CIRCUIT) OPERATING LIGHT (SWITCHED TO CABINETS UPSTAND)
 GPO FOR CART (SEPARATE CIRCUIT)
 SUCTION WIRES 3 CORE 24V IN PROSTHETIC AND LAB

STERILISATION ROOM

240v GPO FOR AUTOCLAVE SEPARATE CIRCUIT - CABINET UPSTAND
 GPO ON CABINET UPSTAND CONFIRM WITH DOCTORE AMOUNT REQUIRED
 240V GPO FOR ULTRASONIC CLEANER (SEPARATE CIRCUIT)



LAYOUT PLAN / PROPOSED DENTAL ROOMS
 SCALE 1:100

16.09.02	2	RE-ISSUED FOR CLIENT COMMENT
21.08.02	1	ISSUED FOR CLIENT COMMENT
DATE	NO	REVISION/REASON FOR ISSUE

Client			
DR PETER FIORE			
Project			
27 TOWNSHEND RD,SUBIACO			
Description			
PROPOSED LAYOUT PLAN			
Scale	Date	Job no.	Drg No.
1:50 @ A3	Aug 2002	23408	SK01.3



THE ART OF MEDICAL DESIGN



Design Mode Interiors



7 Renwick Street
 PO Box 8092
 South Perth 6151
 Western Australia
 Phone (08) 9367 4477
 Facsimile (08) 9367 8114
 Mobile 0419 420 420
 Email dmi@highway1.com.au

Documentation By

Ivan Machin
DRAFTING SERVICES